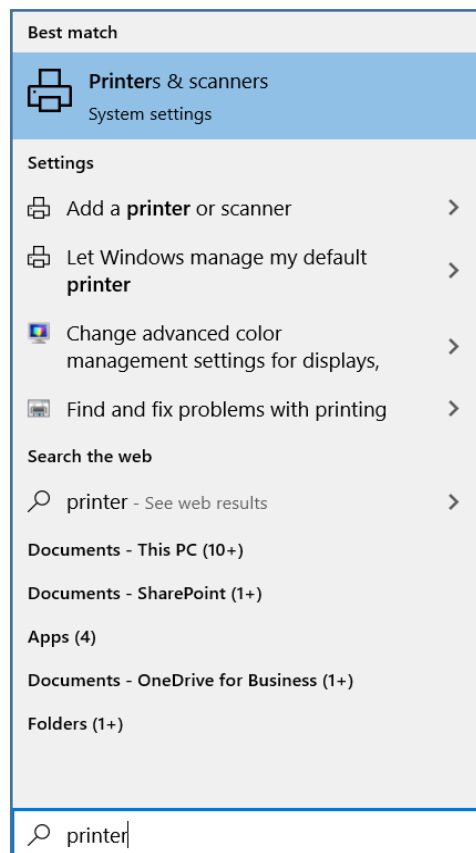


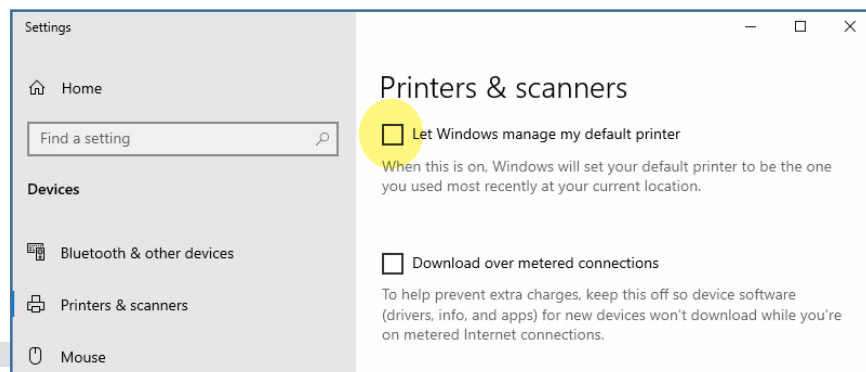
Set Up a Default Printer (Windows 10)

Most Windows 10 systems have smart site-based printing. If you use this feature in Windows 10 already, when you select a printer from an application's print dialog, Windows will start presenting that printer as your default. To set the default printer on your own, follow these steps.

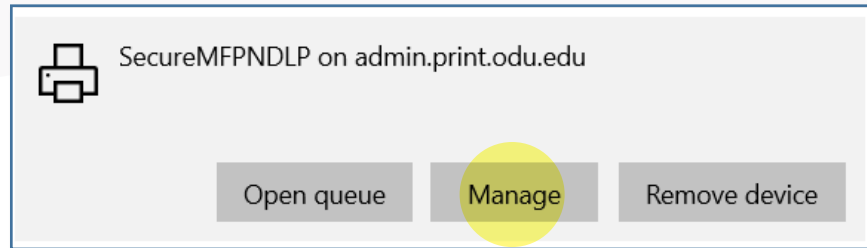
1. In your Search box (next to the start button), type **Printer** and click **Printers and Scanners** in the search results.



2. Scroll down in the Printers & scanners box and uncheck **Let Windows manage my default printer**.



3. Select the printer you want to set as your default and click the **Manage**.



4. Click the **Set as default**.

