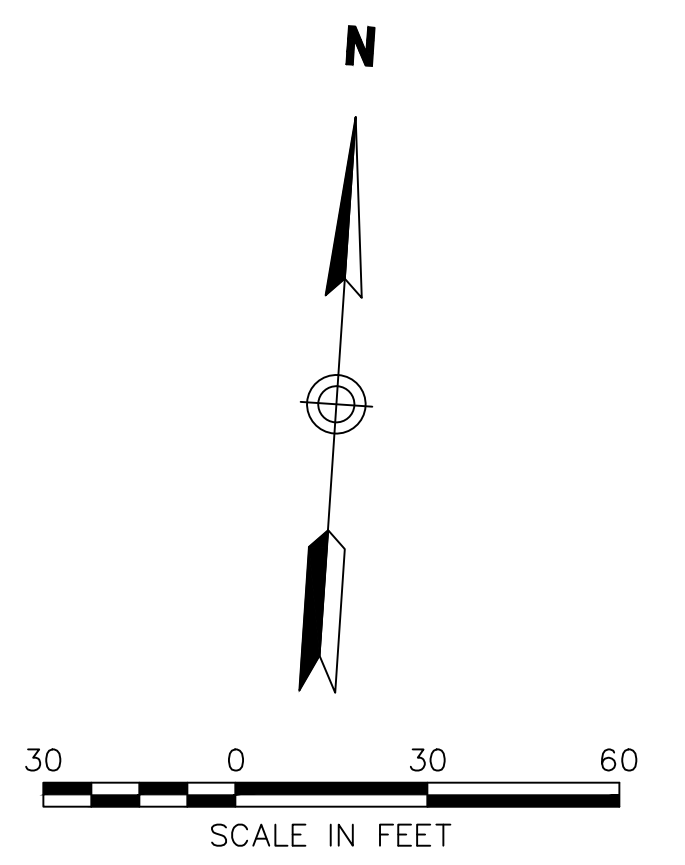
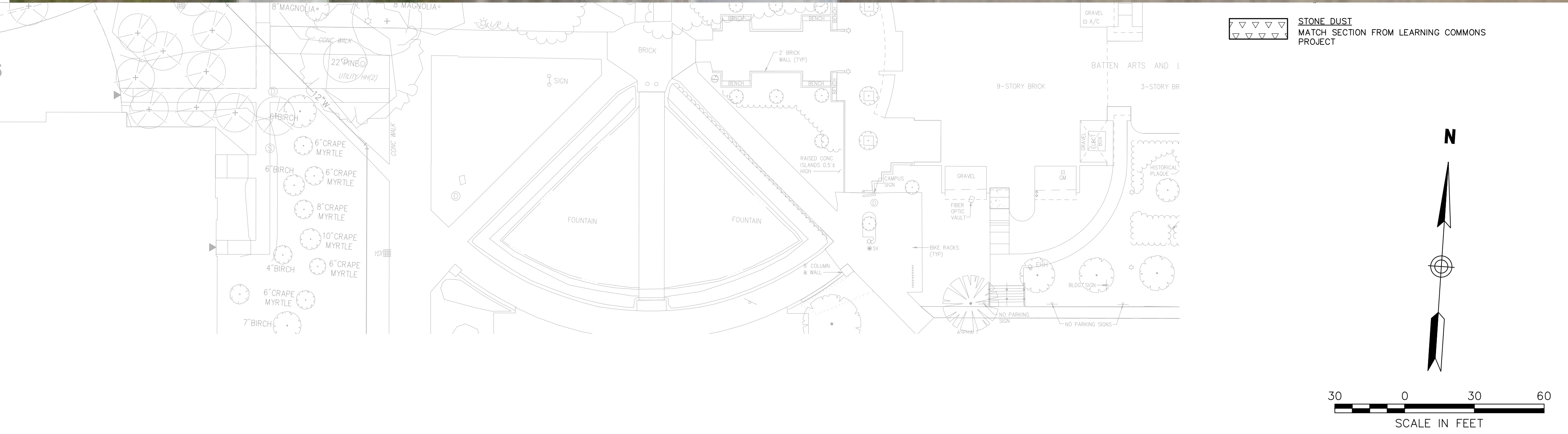
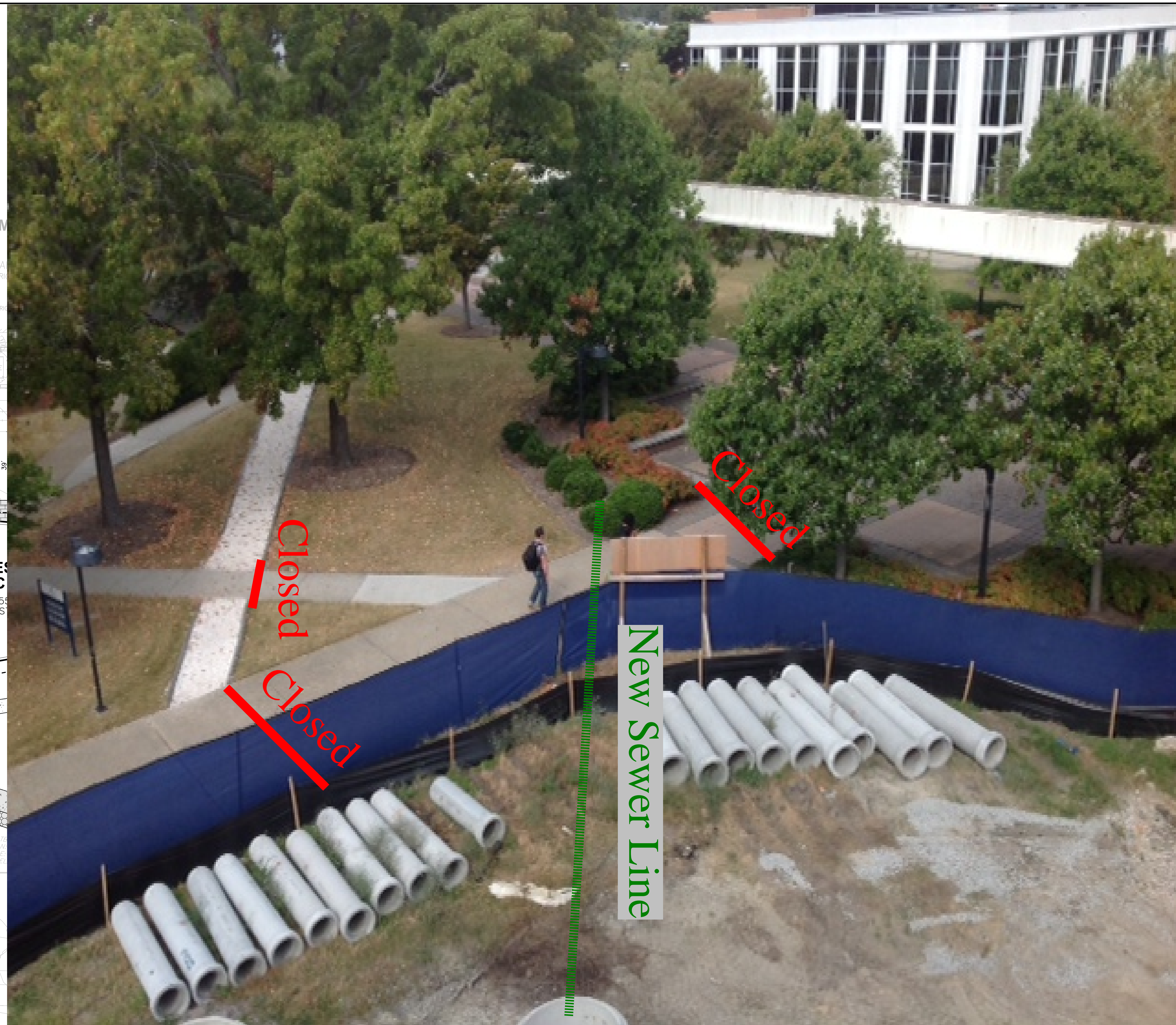
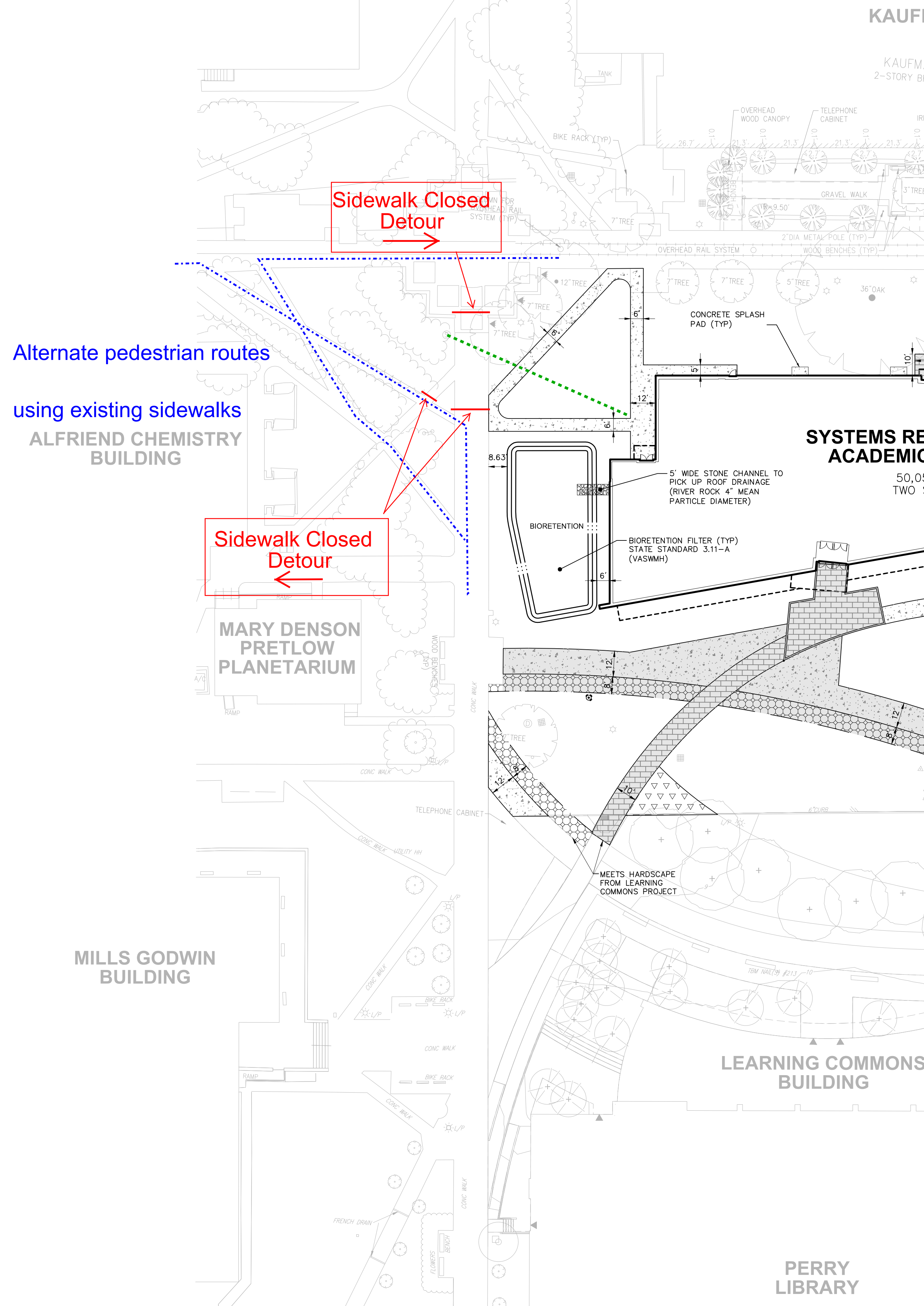


ODU SRAB 221-17678

Temporary Sidewalk Closure/Re-Route for Sanitary Sewer Tie-In

Proposed Closure Starting October 14th



Nov 08, 2012 04:36pm esesember

**OLD DOMINION UNIVERSITY**  
 FACILITIES MANAGEMENT  
 4401 Powhatan Avenue, Room 102B  
 Norfolk, Virginia 23529-1807  
 T 757.683.4156  
 F 757.683.5325  
 W <http://www.odu.edu>

**SILIAM** DESIGNERS & LAB PLANNERS  
 the SLIAM Collaborative  
 250 Summer Street  
 Boston, Massachusetts 02201-1025  
 T 617.571.8000 F 617.571.8500  
 W <http://www.siliam.com>

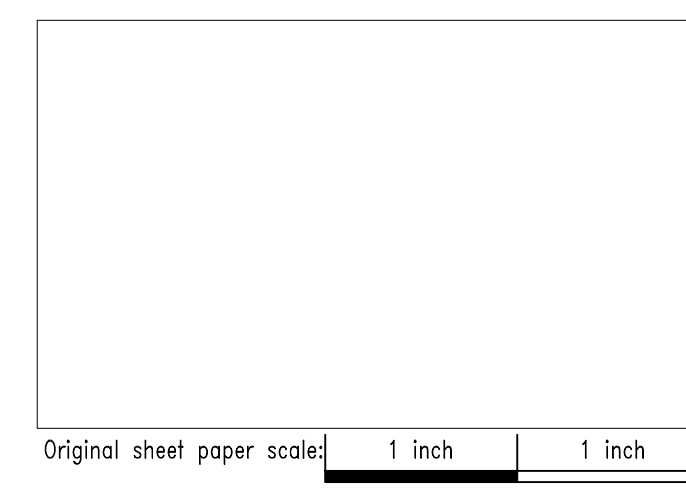
**VHB** CIVIL ENGINEERS  
 Vanessa Hargen Brullin, Inc.  
 Two Columbus Center  
 4500 Main Street, Suite 400  
 Virginia Beach, Virginia 23462-4318  
 T 757.622.2828 F 757.622.6683  
 W <http://www.vhb.com>

**MECHANICAL, ELECTRICAL, PLUMBING  
 FIRE PROTECTION & ACOUSTICAL ENGINEERS**  
 Newcomb & Boyd  
 303 Pinetree Center Avenue, NE Suite 525  
 Atlanta, Georgia 30303-5777  
 T 404.700.8400 F 404.700.8401  
 W <http://www.newcomb-boyd.com>

**STRUCTURAL ENGINEERS**  
 Stroud, Pence and Associates, Ltd.  
 5032 Route Drive, Suite 200  
 Virginia Beach, Virginia 23462-4318  
 T 757.678.8626 F 757.671.6602  
 W <http://www.stpaengineers.com>

**Old Dominion UNIVERSITY**  
*Systems Research and Academic Building*

Number	M/D/Y	Issued For
1	28 AUG 12	Submittal



Seal  
**JOHN D. HINES**  
 Lic. No. 040808  
 10/09/2012  
 PROFESSIONAL ENGINEER

Drawing Title  
**Layout and Materials Plan**

Issue Date: 09 OCT 2012 Project No: 08141-01  
 Scale: As Shown Drawn By: KNO Checked By: EMS

Date: 09 OCT 2012  
 Scale: 1"=30'

Drawing Number  
**C3.01**