

# KAUFMAN HALL

KAUFMAN HALL  
2-STORY BRICK BUILDING

**Signage:**  
**Sidewalk Closed**  
**All Pedestrians**

**Alternate Pedestrian Path**

**Signage:**  
**Sidewalk Closed**  
**All Pedestrians**

**Signage:**  
**Sidewalk Closed Ahead**

**Signage:**  
**Sidewalk Closed Ahead**

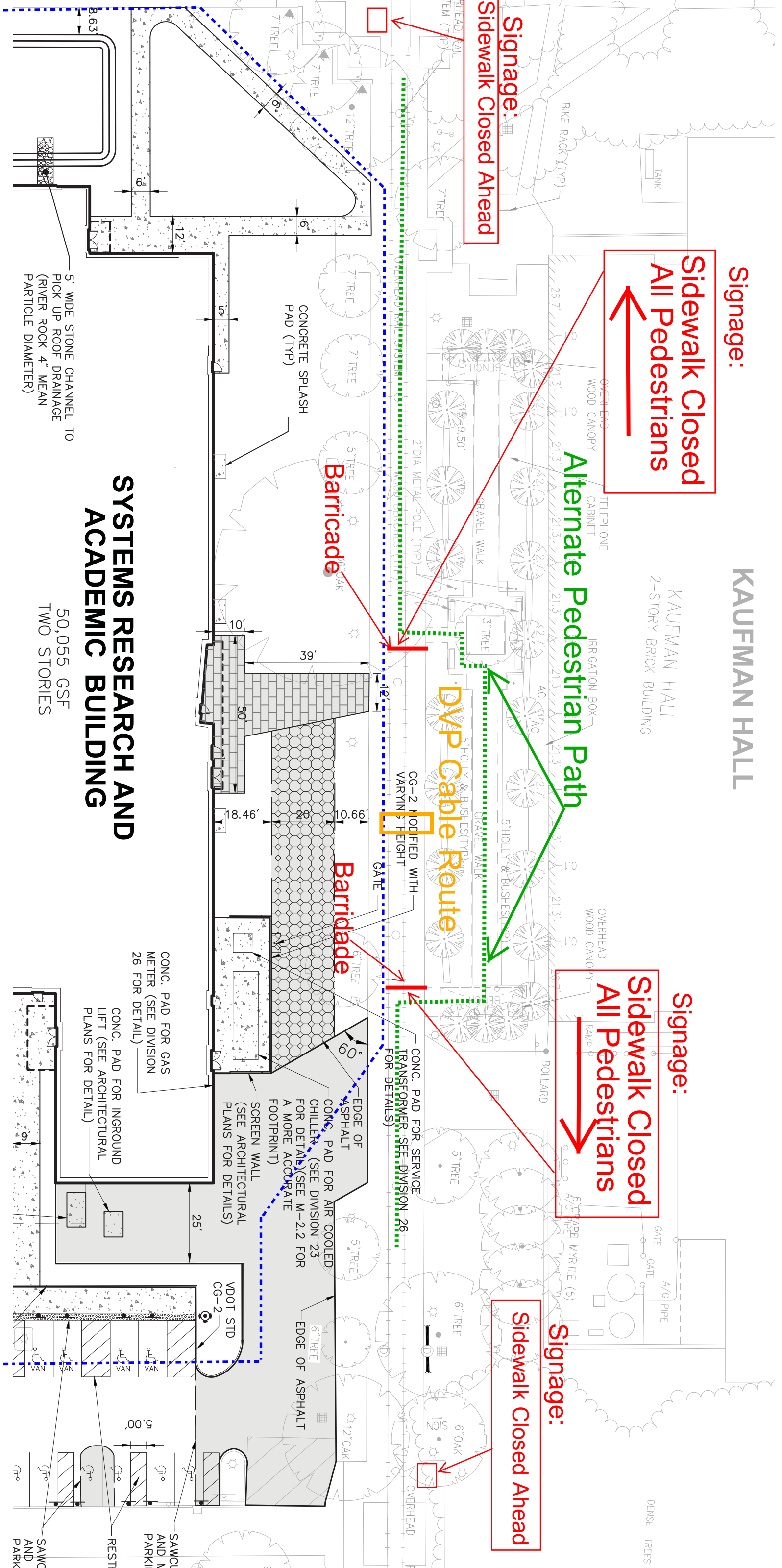
**DVP Cable Route**

**Barricade**

**Barricade**

# SYSTEMS RESEARCH AND ACADEMIC BUILDING

50,055 GSF  
TWO STORIES



5' WIDE STONE CHANNEL TO  
PICK UP ROOF DRAINAGE  
(RIVER ROCK 4" MEAN  
PARTICLE DIAMETER)

CONC. PAD FOR GAS  
METER (SEE DIVISION  
26 FOR DETAIL)

CONC. PAD FOR INGROUND  
LIFT (SEE ARCHITECTURAL  
PLANS FOR DETAIL)

EDGE OF ASPHALT  
CONC. PAD FOR AIR COOLED  
CHILLER (SEE DIVISION 23  
FOR DETAIL)(SEE M-2.2 FOR  
A MORE ACCURATE  
FOOTPRINT)  
SCREEN WALL  
(SEE ARCHITECTURAL  
PLANS FOR DETAILS)

CONC. PAD FOR SERVICE  
TRANSFORMER (SEE DIVISION 26  
FOR DETAILS)

RESTRI  
SAND M.  
PARKIN  
SAWCU  
AND M.  
PARKIN  
SAWCU  
AND M.  
PARKIN